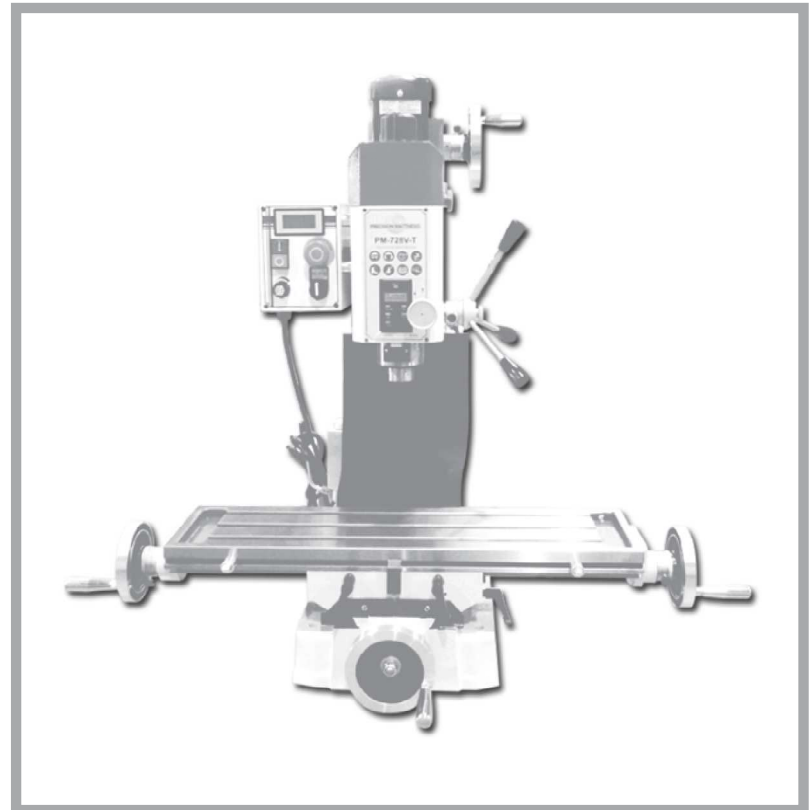


**DOUBLE NUT BALL SCREW KIT
FOR PM-728V-T**



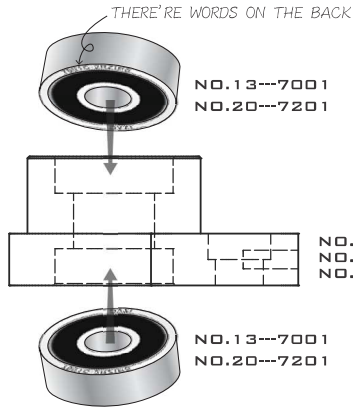
BALL BEARING



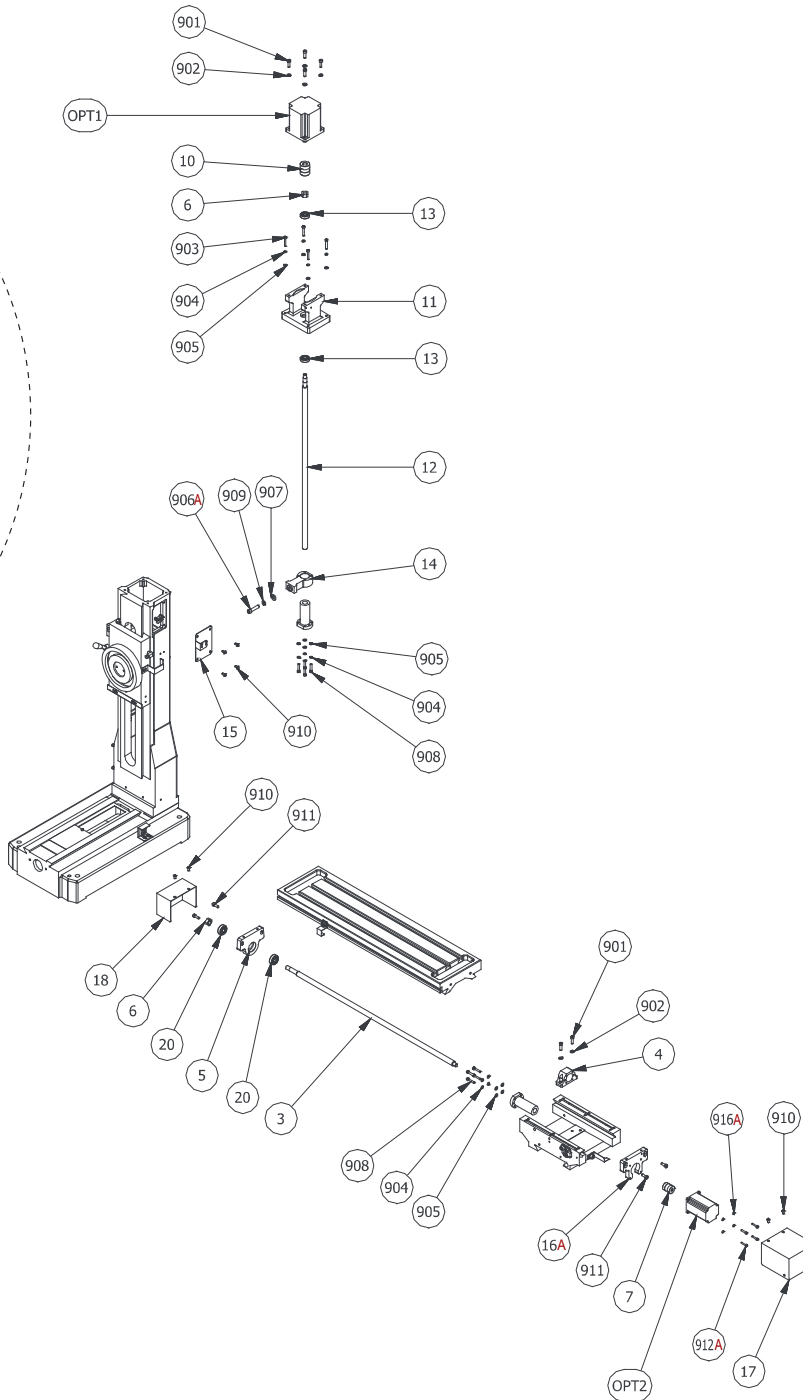
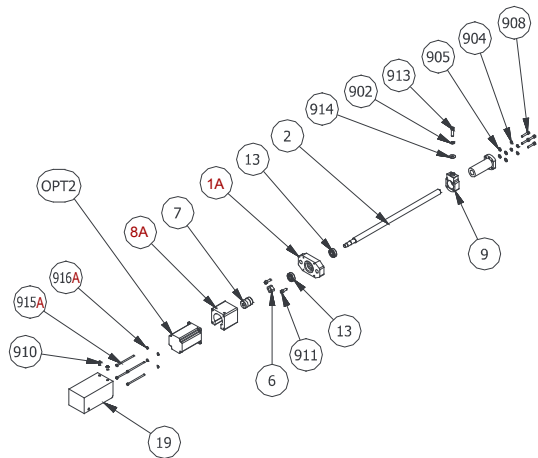
FRONT



BACK



DB COMBINATION
(BACK TO BACK, WORDS FACE TO WORDS)



PART NO.	DESCRIPTION
1A	BALL SCREW BASE ,Y AXIS
2	BALL SCREW, Y ASIX
3	BALL SCREW, X AXIS
4	NUT HOUSING, X AXIS
5	BALL SCREW BASE ,X AXIS, L
6	LOCK NUT
7	COUPLING, X/Y AXIS
8A	MOTOR BASE ,Y AXIS
9	NUT HOUSING, Y AXIS
10	COUPLING, Z AXIS
11	MOTOR BASE ,Z AXIS
12	BALL SCREW, Z AXIS
13	BALL BEARING 7001
14	NUT HOUSING, Z AXIS
15	COLUMN COVER, X AXIS
16A	BALL SCREW BASE ,X AXIS, R
17	COVER, X AXIS, R
18	COVER, X AXIS, L
19	COVER, Y AXIS
20	BALL BEARING 7201
901	CAP SCREW M6-1 X 20
902	LOCK WASHER 1/4" [M6]
903	CAP SCREW M5 X 30
904	LOCK WASHER 3/16" [M5]
905	FLAT WASHER 5-12MM
906A	CAP SCREW M8*35
907	FLAT WASHER 5/16"[M8]
908	CAP SCREW M5 X 25
909	LOCK WASHER 5/16"[M8]
910	BUTTON HEAD CAP SCREWS 5*10
911	CAP SCREW M6-1 X 16
912A	CAP SCREW M5 X 20
913	CAP SCREW M6-1 X 25
914	FLAT WASHER 1/4"[M6]
915A	CAP SCREW M5 X 75
916A	LOCK WASHER M5